



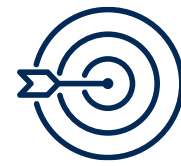
# COMPANY INTRODUCTION

# ABOUT OUR COMPANY



We provide an **intelligent management ecosystem** and **the most advanced autonomous robot lines** for warehousing and lifestyle services.

## MISSION



**Bringing autonomous robot technology closer to businesses and human life.**

CoRo is committed to:

- *Optimizing warehouse and logistics operations.*
- *Reducing labor costs, increasing efficiency.*
- *Enhancing quality of life through automation.*

## VISION



In the long term,  
**CoRo aims to:**

- *Build a comprehensive robotics ecosystem. (Hardware + Software + Platform)*
- *Integrate robots into various fields: logistics, retail, healthcare, daily life.*
- *Become a strategic partner for digital transformation enterprises.*

## VALUES

### **Innovation:**

Always staying updated and applying the latest technologies in robotics, AI, and IoT.

### **Practicality:**

Practical solutions that can be effectively implemented and generate tangible value.

### **Reliability:**

The system is stable and provides long-term customer support.

### **Customer-Centric:**

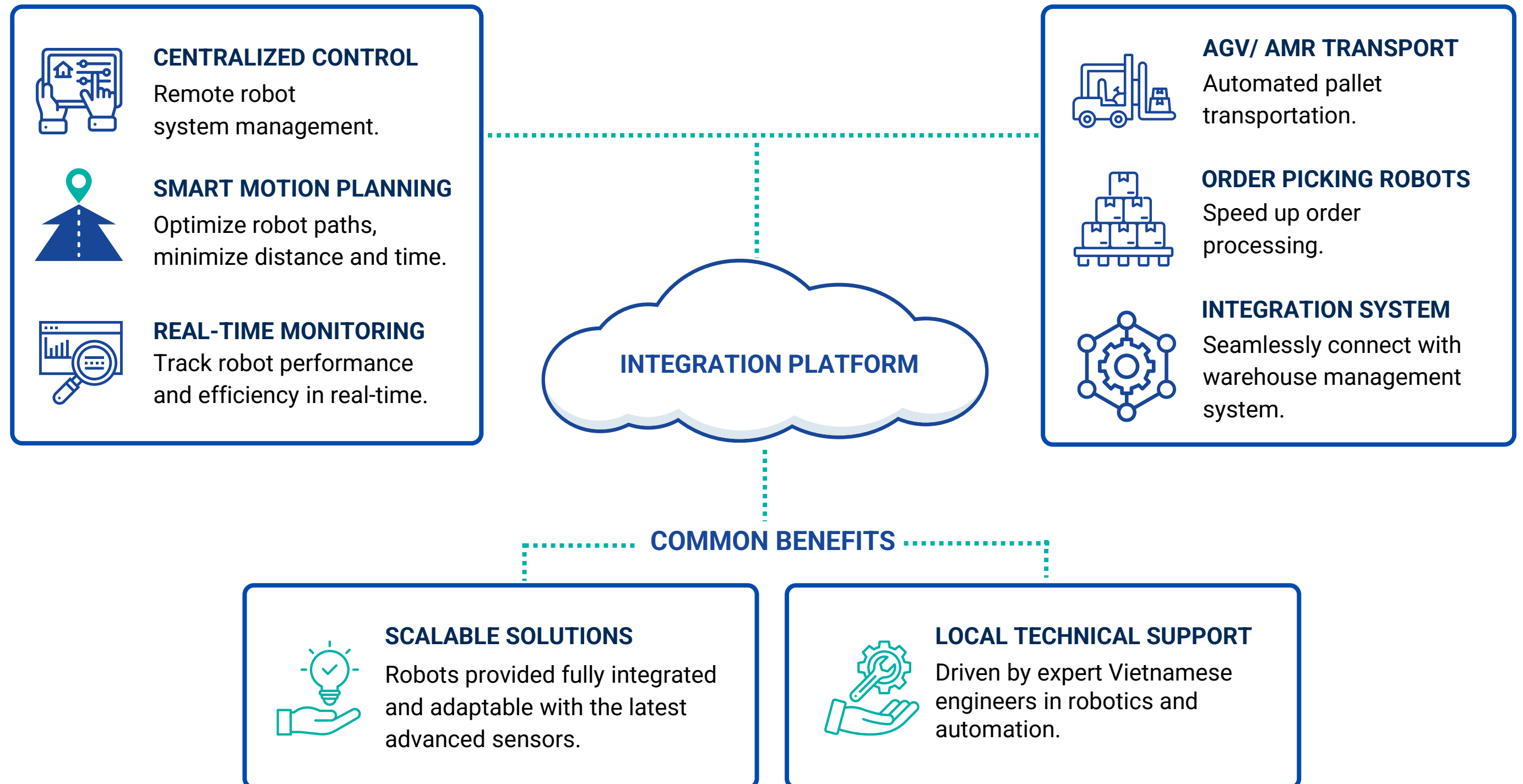
Design solutions based on the real-world challenges of businesses.

### **Collaboration:**

Connecting the ecosystem of technology, logistics, and manufacturing partners.

# WHAT WE OFFER ALWAYS

## ROBO-HI®



# PRODUCT OVERVIEW

Service Robotics Ecosystem for Smart Operations



## SERVICE ROBOTICS ECOSYSTEM

**Smart robots** for reception, delivery, and cleaning - fully automated and centrally managed.



## CATEGORY

**Robotics & Intelligent Operations Platform** (Japanese technology + Vietnamese localization)



## STAGE

**Proven deployment & scaling phase**



## CORE FEATURES



### Autonomous Navigation (LiDAR & AI)

Precise navigation in complex Warehouse environments.



### Multi-robot Coordination

Coordinated fleet of robots working together in real time for maximum efficiency.



### Smart Task Management

Intelligent task allocation and real-time operation monitoring.



### Auto Charging & Maintenance

Automatic charging and maintenance Schedule to minimize downtime.



## KEY MESSAGES



### Optimize operational efficiency

Reduce 30-50% in operating costs.



### Seamless infrastructure integration

Deep integration with systems & platforms Already in place.



### Proven & scalable solution

Proven through successful PoC programs, ready to scale.



### Japanese-standard technology

Japanese technology & quality standards.



## OUR GOAL

Deliver autonomous robotic solutions that optimize cost, enhance efficiency, and seamlessly integrate into modern logistics operations.



# WHY CHOOSE CÔRÔ's SERVICES?



## END-TO-END SOLUTION

Complete ecosystem from Robots, software to system Integration and support.



## ADVANCED TECHNOLOGY

Intelligent robots and smart algorithms for optimal performance and safety.



## FLEXIBLE & SCALABLE

Stable, durable and built for continuous industrial operations.



## PROVEN RELIABILITY

Stable, durable and built for continuous industrial operations.

## Optimized for Key Industries In VN



Logistics &  
Warehousing



Manufacturing



Retail &  
E-commerce



Food &  
Beverage



Automotive



Healthcare



And more..

# BEFORE vs AFTER THE POWER OF AUTOMATION

### BEFORE (MANUAL OPERATIONS)



-  **High labor dependency**  
Many operators & manual forklifts
-  **Lower productivity**  
Limited working hours & efficiency
-  **Safety risks**  
Higher risk of accidents and damages
-  **Lack of visibility**  
Hard to track and optimize operations
-  **High long-term cost**  
Labor, training and maintenance cost

VS

### AFTER (WITH CÔRÔ ROBOTICS)



-  **Automation 24/7**  
Consistent and reliable operations
-  **Higher productivity**  
Faster throughput and optimized flow
-  **Safer operations**  
Reduce accidents and product damage
-  **Real-time visibility**  
Data-driven decision and control
-  **Lower total cost of ownership**  
Improve ROI and competitiveness

# OPERATIONAL PROCESS



**PRE-DEPLOYMENT**

- ✓ Solution design tailored to your workflow
- ✓ System & infrastructure preparation
- ✓ Testing and validation before deployment

**OPERATION & SUPPORT**

- ✓ 24/7 technical support & issue handling
- ✓ OTA updates & performance optimization
- ✓ Operation analytics & continuous improvement

**FAST DEPLOYMENT**  
 Reduce lead time and get robots up and running quickly.

**SEAMLESS INTEGRATION**  
 Easily integrate with existing systems and infrastructure.

**SCALABLE SOLUTIONS**  
 Flexible to grow with your business needs.

**RELIABLE OPERATIONS**  
 Ensure safety, stability and high performance.

## INTEGRATED WITH



SW55A - SW80A  
 Commercial Waterless Cleaning Robot

Aotingbots, established in 2019, is a globally recognized provider of commercial cleaning robots and solutions. Their core team includes experts and professors from leading institutions such as Harbin Institute of Technology, Beihang University, and Beijing Institute of Technology, along with experienced professionals from the cleaning industry.

Their solutions focus on advanced robotics technologies, including waterless cleaning, localization and navigation, obstacle avoidance, AI deep learning, and embodied intelligence. By leveraging Aotingbots' technology, our system is able to deliver efficient and intelligent cleaning operations, meeting the demands of modern commercial environments.



## Core Points Cleaner, More Worry-Free, Smarter



Waterless Cleaning Technology  
 Spotless to the End



0cm Edge Cleaning  
 Pushing the Limits of Cleanliness



Quick Deployment  
 Easy Maintenance



Human-Robot Collaboration  
 Uninterrupted 24/7 Operation



Intelligent Mapping  
 Centimeter-Level Positioning



Real-Time Task Monitoring  
 Automatic Cleaning Report Submission

## SW55 A: 4in1

Mopping

Sweeping

Vacuuming

Pushing dust



Hard Flooring: 8 hours  
 Silent Mode: 10 hours



This is a compact and lightweight waterless cleaning robot specifically designed for commercial use.

### Key Features:

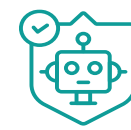
- **Elevator Control and Gate Access:** Supports seamless integration with control systems.
- **Optional Add-ons:** Can be enhanced with features such as:



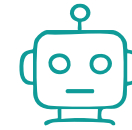
Aromatherapy



Disinfection



Security



Patrol



Fire Detection

It is widely applicable in **small to medium-sized** scenarios such as hotels, office buildings, shopping malls, residential areas, and conference centers.



Hotels



Office buildings



Shopping malls/  
Supermarkets



Exhibition centres/  
Conference centres



And more

SUITABLE FOR A WIDE  
 RANGE OF FLOORS

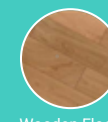
Premium  
Floors



Short-pile Carpet



Long-pile Carpet



Wooden Floor



Marble

Common  
Floors



Terrazzo



Cement Floor



Ceramic Tiles



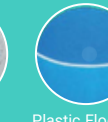
Epoxy Resin



Sandstone



PVC



Plastic Flooring

## SW80 A: 3in1

Mopping

Sweeping

Vacuuming



Hard Flooring: 8 hours  
 Silent Mode: 12 hours



This is an all-in-one waterless cleaning robot designed for commercial and industrial use.

This robot is widely used in **medium to large** scenarios such as shopping malls, factories, conference centers, exhibition halls, and other public spaces.



Shopping malls/  
Supermarkets



Exhibition centres/  
Conference centres



Schools



Factories



Hospitals/Medical centres



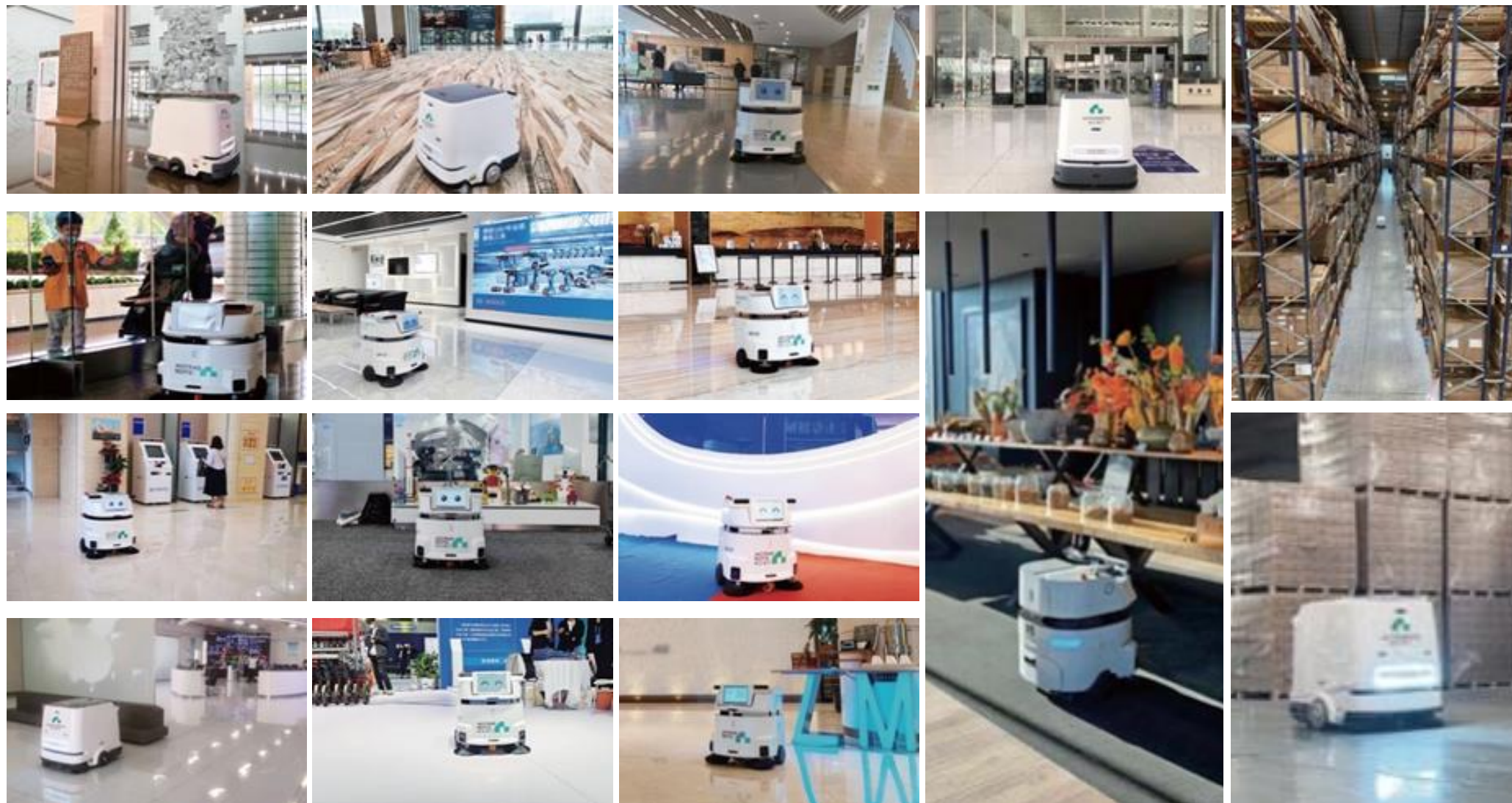
Railway stations/  
Metros/Airports



And more



## ACTUAL OPERATING IMAGES OF ROBOTS BY THE AOTINGBOTS.



- ✔ The robot trash box can be dump once every 2-4 weeks Aoting robot can work on a schedule and charge automatically. Aoting robot and cleaning staff can work without disturbing each other, clean each focusing on their assigned areas.
- ✔ No need to reinstall the workstation.  
No need to change consumables frequently.
- ✔ The robot avoids water leakage when cleaning blind paths, gaps, and during turns, reducing the risk of pedestrians slipping.
- ✔ High-speed microfibre soft brushes, intimate and meticulous mopping, wipe sweeping with polishing function.



**THANK YOU**  
FOR WATCHING